



AIR DISTRIBUTION **STOCK CATALOG**

Pittsburgh

HAVTECH COMMERCIAL DISTRIBUTION LOCATIONS

When you need air distribution equipment, you need a company you can rely on to provide quality products at an affordable price, and you need it to be all in one place. The Havtech Air Distribution Team offers the expertise to help whether you are installing, maintaining or upgrading any HVAC system.

Our fully stocked Havtech Commercial Distribution (HCD) Stores will allow you to get to the jobsite or customer fast. Whether you need a new piece of equipment, an OEM part or general parts and supplies, we can get you on the road with only one stop.

We offer free scheduled delivery for any order over \$500. Please call for details.

FOUR LOCATIONS TO SERVE YOU

BRIDGEVILLE RETAIL STORE

368 Commercial Stret Ste 100
Bridgeville, PA 15017
(412) 468-0134
parts@havtech.com

RICHMOND RETAIL STORE

7314 Impala Drive
Richmond, VA 23228
(804) 264-2911
parts@havtech.com

COLUMBIA RETAIL STORE

9505 Berger Road
Columbia, MD 21046
(240) 568-0960
parts@havtech.com

CAPITOL HEIGHTS RETAIL STORE

1101 Hampton Park Blvd, Ste 400
Capitol Heights, MD 20743
(240) 547-0287
parts@havtech.com

YOU DEMAND THE BEST TECHS – SO DO WE.

Our highly sought-after team of technicians has industry-leading expertise across a wide range of equipment. We service your entire system, helping you resolve complicated technical issues and operate at maximum efficiency. With Havtech, you get one team of experts to source, install, start-up and conduct preventive or scheduled maintenance of your equipment.



SCAN FOR OUR CURRENT
AIRSTOCK DIGITAL CATALOG

RGD Product Cross Reference 4

Registers, Grilles & Diffusers

Supply Diffusers 5

Slot Diffusers 7

Supply Registers 8

Return Grilles 9

Perforated and Egg Crate Returns 11

Accessories 13

Single Duct VAV Boxes 14

Fire Dampers, Louvers, and Accessories

Fire Dampers 15

Louvers 16

Duct Doors 17

Control Dampers & Accessories

Control Dampers & Accessories 18

Flex-Vent & Duct Bands

Flex-Vent & Duct Bands 19

Snaplock & Spiral Pipe & Fittings

Snaplock Pipe & Fittings 20

Spiral Pipe & Fittings 21

Cabinet Fans

Cabinet Fans 22

Access Doors

Access Doors 24

The Fine Print

Terms and Conditions of Sale..... 22

RGD PRODUCT CROSS REFERENCE

4

Price Industries	Metal*Aire	Nailor Industries	Titus	Krueger	Tuttle & Bailey
SMD	5500S	6500	TDC	SH	M
SCD	5700/5800	RNS	TMS	1400	S1200
SPD	5750/5850	UNI	OMNI	PLQ	S1100
RCDE	3100	RNR	TMR	RM1	P3
PDF	7500/7550	4320/4325	PAS	6604	PP
PDC	7600	4320CB/4325CB	PCS	6504	PV
PDDR	7500R	4360/4365	PAR/PMR/PDR	6490/6690	PP
PFRF	SPRTB	4302	PXP/PXP-DF	6790	PTL
APF	PFTB	DFA	TRM	5HCF	SMF
520D	V4004SD	61DV/61DH	300R	880	T64
530	SRH	6145	350R	S80	T70
80	CC5	51EC	50	EGC5	CRE500
530FF	SRHF	61FB45	350RLF1	S80H	T70DFB
TBDI	PHPSI	57101	TBDI	PSTBSI	SVPS
SDS100	6600	5010	ML-39	1910	6000
SDV5	TH	3001	ESV	LMHS	SDV
RAC	--	--	ACPT	--	--
CF	FAL	FLH	FL	DFL	AIR TRAC

The information contained within this cross reference should be used as a "guide" when making product selections. Havtech, LLC will not be held responsible for any errors caused by its use.

SPD

Square Plaque Diffuser



SPD

SCD

Square 3-Cone Diffuser



SCD

Inlet Size	Panel Size	CFM	SPD31 Steel, T-Bar	SPD17 Steel, Finline	SCD31 Steel, T-Bar	SCD17 Steel, Finline	SCDA3 Adj, Steel, T-Bar	SCDA17 Adj, Steel, Finline	VCR8E Damper
6	12 × 12	157	●	--	●	--	--	--	●
	24 × 24		●	●	●	●	●	●	●
8	12 × 12	279	●	--	●	--	--	--	●
	24 × 24		●	●	●	●	●	●	●
10	24 × 24	436	●	●	●	●	●	●	●
12	24 × 24	628	●	●	●	●	●	●	●
14	24 × 24	855	●	●	●	●	●	●	●
15	24 × 24	982	●	●	●	--	--	--	--

CFM @ 800FPM Neck Velocity.
 Border 3/31 is for a 15/16" flat ceiling grid.
 Border 17 is for a 9/16" fineline ceiling grid.
 ● In Stock

SMD

Steel, Louvered Face Directional Diffuser




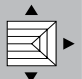
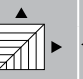
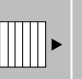
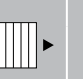

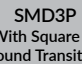

SMD36



SMD3P



SMD6

 4A  3A  2G  2S  1S	Panel Size	CFM	T-Bar		Surface Mount
			 SMD3P With Damper	 SMD3P With Square to Round Transition	 SMD6 With Damper
Cores 3A, 2G, 2S and 1S can be factory-ordered. Call for more information	24 × 24	125	6 × 6	6"	6 × 6
	24 × 24	282	9 × 9	8"	9 × 9
	24 × 24	500	12 × 12	10"	12 × 12
	24 × 24	781	15 × 15	12" 14"	15 × 15
	24 × 24	1125	18 × 18	16"	18 × 18

CFM @ 500FPM Neck Velocity.
 *18 x 18 is only available with Frame 36.



PDF



PDC

PDF/PDC

Steel, Perforated Supply Diffuser

Size	Panel Size	CFM	PDF3 Face-Mounted Pattern Controller	PDF17 Face-Mounted Pattern Controller	PDC3 Curved Blade, Neck-Mounted Pattern Controller	PDC17 Curved Blade, Neck-Mounted Pattern Controller	VCR8E Damper
6	12 × 12	98	●	--	--	--	●
	24 × 24	98	●	●	●	●	●
8	24 × 24	175	●	●	●	●	●
10	24 × 24	273	●	●	●	●	●
12	24 × 24	393	●	●	●	●	●
14	24 × 24	535	●	●	●	●	●
16	24 × 24	535	●	●	--	--	--

CFM @ 500FPM Neck Velocity
 Model PDC3 stocked in 4-Way air pattern only.
 Border 3 is for a 15/16" flat ceiling grid.
 Border 17 is for 9/16" fineline ceiling grid.
 ● In Stock

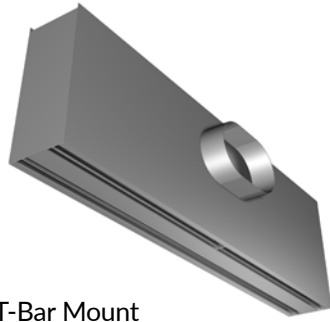
RCDE

Steel, Round Diffuser

Size	CFM	RCDE	VCR8E Damper
6	160	●	●
8	280	●	●
10	435	●	●
12	630	●	●

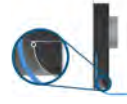


CFM @ 800FPM Neck Velocity.
 ● In Stock



TBD12/3/4

Insulated Slot Diffuser with T-Bar Mount



Curved
TBD12 Series



Ice-Tong
TBD13 Series



Blade
TBD14 Series

Slot Width	# of Slots	Dimensional Data				TBD12 Standard & Frame 17	TBD13 Standard & Frame 17	TBD14 Standard & Frame 17	APF Plaster Frame
		Length	Height	Width	Inlet (Oval)				
1"	2	24	8	4	6, 8	--	--	● (Standard only)	●
		48	8	4	6, 8, 10	●	●	●	●
11	12		--		--	● (Standard only)	●		
1.5"	2	48	11	5	12	--	--	● (Standard only)	●

Plaster Frame Model APF is to be used for installation of slot diffuser Model TBD1 in sheet rock or plaster ceilings.
See Accessories on page 13.
See www.Price-Hvac.com for performance data.
● In Stock

SDS100

Linear Slot Diffuser with 1" Slot Spacing



Length	# of Slots	Surface Mount				
		SDS100-2 Flange Frame Concealed Mounting	SDS100-EC-W Flanged End Cap	SDS100-EC-Z Flush Z Style end Cap	SDS100-UPL Insulated	SDS-ASP Alignment Splice Plate
48	2	●	●	●	●	●
60	2	●	●	●	●	●
72	2	●	●	●	●	●

Finish is B12 White on Frame, Black Pattern Controllers
See www.Price-Hvac.com for performance data.
● In Stock

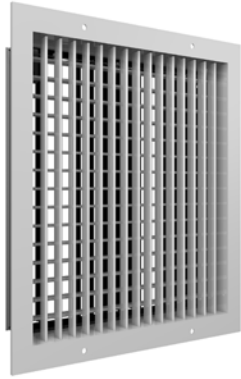
SDS75

Linear Slot Diffuser with 3/4" Slot Spacing



Length	# of Slots	Surface Mount				
		SDS75-2 Flange Frame Concealed Mounting	SDS75-EC-W Flanged End Cap	SDS75-EC-Z Flush Z Style end Cap	SDS75-UPL Insulated	SDS-ASP Alignment Splice Plate
48	2	●	●	●	●	●
60	2	●	●	●	●	●
72	2	●	●	●	●	●

Finish is B12 White on Frame, Black Pattern Controllers
See www.Price-Hvac.com for performance data.
● In Stock



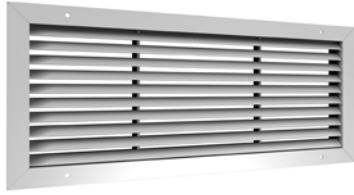
520D

Steel, Double Deflection Supply Register with Damper

Size	CFM	520D
6 x 4	75	●
6 x 6	90	●
8 x 4	90	●
8 x 6	130	●
8 x 8	195	●
10 x 4	110	●
10 x 6	170	●
10 x 8	230	●
10 x 10	300	●
12 x 4	130	●
12 x 6	195	●
12 x 8	300	●
12 x 10	345	●
12 x 12	450	●
14 x 4	150	●
14 x 6	230	●
14 x 8	345	●
14 x 10	405	●
14 x 12	535	●
14 x 14	590	●
16 x 4	170	●
16 x 6	260	●
16 x 8	405	●
16 x 10	450	●
16 x 12	590	●
16 x 14	670	●

Size	CFM	520D
16 x 16	800	●
18 x 6	450	●
18 x 8	450	●
18 x 10	535	●
18 x 12	670	●
20 x 6	345	●
20 x 8	500	●
20 x 10	590	●
20 x 12	725	●
20 x 14	900	●
24 x 6	400	●
24 x 8	590	●
24 x 10	700	●
24 x 12	900	●
24 x 16	1220	●
30 x 6	535	●
30 x 8	725	●
30 x 10	975	●
30 x 12	1150	●
30 x 16	1560	●
36 x 6	775	●
36 x 8	900	●
36 x 10	1180	●
36 x 12	1390	●
36 x 14	1625	●
36 x 16	1800	●

CFM @ 500FPM Neck Velocity.
● In Stock



530

Steel, 45 Degree Single Deflection Return Grille

Size	CFM	530	VCS3 Dampers
6 x 6	90	●	●
8 x 6	130	●	●
8 x 8	195	●	●
10 x 6	170	●	●
10 x 8	230	●	●
10 x 10	300	●	●
12 x 6	195	●	●
12 x 8	300	●	●
12 x 10	345	●	●
12 x 12	455	●	●
14 x 6	230	●	●
14 x 8	345	●	●
14 x 10	405	●	●
14 x 12	535	●	●
14 x 14	590	●	●
16 x 6	260	●	●
16 x 8	405	●	●
16 x 10	455	●	●
16 x 12	590	●	●
16 x 14	670	●	●
16 x 16	800	●	●
18 x 6	300	●	●
18 x 8	455	●	●
18 x 10	535	●	●
18 x 12	670	●	●
18 x 14	800	●	●
18 x 16	900	●	●
18 x 18	1040	●	●
20 x 8	500	●	●
20 x 10	590	●	●

Size	CFM	530	VCS3 Dampers
20 x 12	725	●	●
20 x 14	900	●	●
20 x 16	1040	●	●
20 x 18	1225	●	●
20 x 20	1300	●	●
24 x 8	590	●	●
24 x 10	725	●	●
24 x 12	900	●	●
24 x 14	1040	●	●
24 x 16	1225	●	●
24 x 18	1393	●	●
24 x 20	1555	●	●
24 x 24	1805	●	●
30 x 8	725	●	●
30 x 10	900	●	●
30 x 12	1175	●	●
30 x 14	1390	●	●
30 x 16	1560	●	●
30 x 20	2145	●	●
30 x 24	2275	●	●
30 x 30	2790	●	--
36 x 8	900	●	●
36 x 10	1225	●	●
36 x 12	1225	●	●
36 x 16	1925	●	●
36 x 20	2325	●	●
36 x 24	2790	●	●
36 x 30	3700	●	--
36 x 36	4500	●	--
48 x 24	4000	●	●

*530D (530 with Damper). CFM @ 500FPM Neck Velocity.

T-Bar

Size	CFM	Panel Size	530 T-Bar	FR17
20 x 20	1280	24 x 24	--	●
22 x 10	683	24 x 12	●	--
22 x 22	1568	24 x 24	●	--
46 x 22	3525	48 x 24	●	--

● In Stock



530D

Steel, 45 Degree Single Deflection Return Register with Damper

Size	CFM	Panel Size	530D T-Bar
22 x 10	683	24 x 12	●
22 x 22	1568	24 x 24	●
46 x 22	3525	48 x 24	●

● In Stock



530FF

Steel, Lay-In Filter Return Grill

Size	CFM	Panel Size	530FF Steel
20 x 20	1287	24 x 24	●

Filters are not included (Filter Rack is 1")
CFM @ 500FPM Neck Velocity.

● In Stock

PDDR3

Steel, Perforated Return Diffuser with Round or Square Duct Connection for T-Bar Ceilings



Square Duct Connection

Inlet Size	CFM	Panel Size	PDDR Square T-Bar
10 × 10	347	12 × 12	●
22 × 10	764	24 × 12	●
22 × 22	1681	24 × 24	●
46 × 22	3514	48 × 24	●

CFM @ 500FPM Neck Velocity.
 Border type 3 is for 15/16" flat ceiling grid.
 ● In Stock



Round Duct Connection

Inlet Size	CFM	Panel Size	PDDR Round T-Bar
6	98	24 × 24	●
8	175	24 × 24	●
10	273	24 × 24	●
12	393	24 × 24	●
14	535	24 × 24	●
16	698	24 × 24	●
18	750	24 × 24	●

CFM @ 500FPM Neck Velocity.
 Border type 3 is for 15/16" flat ceiling grid.
 ● In Stock



PDDR17

Square Duct Connection

Inlet Size	CFM	Panel Size	PDDR Square T-Bar
22 × 22	1681	24 × 24	●

CFM @ 500FPM Neck Velocity.
 Border type 17 is for 9/16" fineline ceiling grid.
 ● In Stock

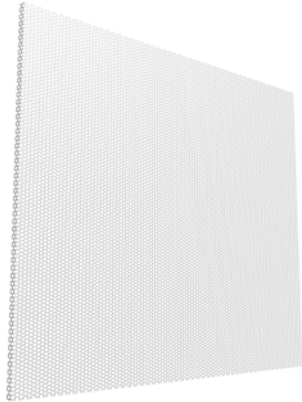


PDDR17

Round Duct Connection

Inlet Size	CFM	Panel Size	PDDR Round T-Bar
6	98	24 × 24	●
8	175	24 × 24	●
10	273	24 × 24	●
12	393	24 × 24	●
14	535	24 × 24	●
16	698	24 × 24	●
18	750	24 × 24	●

CFM @ 500FPM Neck Velocity.
 Border type 17 is for 9/16" fineline ceiling grid.
 ● In Stock



PFRF

Steel, Perforated Face Return Panel

Size	CFM	PFRF3 T-Bar	PFRF17 T-Bar
24 x 24	1830	●	●

CFM @ 500FPM Neck Velocity
 Border type 3 is for 15/16" flat ceiling grid and 17 is for 9/16" fineline ceiling grid.
 ● In Stock



80

Aluminum Egg Crate Grille with 0° Deflection

T-Bar

Size	CFM	Panel Size	80 No Damper	80D With Damper	80FR17 No Damper
22 x 10	669	24 x 12	●	●	--
20 x 20	1270	24 x 24	--	--	●
22 x 22	1550	24 x 24	●	●	--
46 x 22	3310	48 x 24	●	●	--

CFM @ 500FPM Neck Velocity.
 Border 17 is for 9/16" fineline ceiling grid.
 ● In Stock

RAC

Return Air Canopy

Prevents the transfer of occupant noise into the plenum above

Size	Length	Height	RAC
24 x 24	24	7	●
48 x 24	48	7	●

● In Stock



SPF

Steel Plaster Frame For T-Bar Diffusers
Installed in Sheet Rock Ceilings

Size	SPF
12 x 12	●
24 x 12	●
24 x 24	●

● In Stock



APF

Aluminum Plaster Frame for plenum slot diffusers

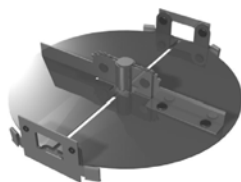
Model	Slot Width	# of Slots	Length	APF Plaster Frame
APF TBDI4100	1"	2	24	●
APF TBDI4100			48	●
APF TBDI4150	1.5"	2	48	●

Plaster Frame Model APF is to be used for installation of slot diffuser Model TBDI 2/3/4 in sheet rock or plaster ceilings.

● In Stock

VCR8E

Inlet Size	VCRE8 Damper
6	●
8	●
10	●
12	●
14	●



CFM @ 500FPM Neck Velocity

● In Stock

Touch Up Paint

For use with Price products with a B12 white finish, B15 aluminum finish, or B17 black finish

Item Number	Finish	
TUPB12	B12 White	●
TUPB15	B15 Aluminum	●
TUPB17	B17 Black	●

● In Stock



Single Duct Terminal Units



SDV5 Standard Construction

- + 22 gauge galvanized steel
- + 3/4" fiber free insulation
- + Gasketed damper, mechanically sealed
- + Multipoint crossflow sensor
- + Controls enclosure
- + Slip and drive connection

SDV5
VAV Single Duct Box

Inlet Size	CFM Range	Dimensional Data (H × W × L)	
		VAV Box	SDV5 VAV Box
6	65 - 550	8 × 12 × 22½	●
8	125-1100	10 × 12 × 20½	●
10	210-1800	12½ × 14 × 20½	●
12	300-2600	15 × 16 × 20½	●
14	430-3700	17½ × 20 × 23½	●
16	575-5000	18 × 24 × 23½	●

● In Stock



VFD-10D-A

Vertical or horizontal, Curtain Style Fire Damper

- For Use In Static or Dynamic HVAC Systems
- U.L. 555 Fire Resistance Rating: 1 ½ Hour
- 165°F UL Listed Fusible Link
- Qualified to 2,000 ft/min and 4 in. wg.

Item Number	Size
VFD-10D-A 6X6	6 x 6
VFD-10D-A 8X6	8 x 6
VFD-10D-A 8X8	8 x 8
VFD-10D-A 10X6	10 x 6
VFD-10D-A 10X8	10 x 8
VFD-10D-A 10X10	10 x 10
VFD-10D-A 12X6	12 x 6
VFD-10D-A 12X8	12 x 8

Item Number	Size
VFD-10D-A 12X10	12 x 10
VFD-10D-A 12X12	12 x 12
VFD-10D-A 14X6	14 x 6
VFD-10D-A 14X8	14 x 8
VFD-10D-A 14X10	14 x 10
VFD-10D-A 14X12	14 x 12
VFD-10D-A 14X14	14 x 14
VFD-10D-A 16X8	16 x 8
VFD-10D-A 16X10	16 x 10
VFD-10D-A 16X12	16 x 12
VFD-10D-A 16X14	16 x 14
VFD-10D-A 16X16	16 x 16
VFD-10D-A 18X10	18 x 10
VFD-10D-A 18X12	18 x 12
VFD-10D-A 18X14	18 x 14
VFD-10D-A 18X16	18 x 16
VFD-10D-A 18X18	18 x 18

Item Number	Size
VFD-10D-A 20X10	20 x 10
VFD-10D-A 20X12	20 x 12
VFD-10D-A 20X14	20 x 14
VFD-10D-A 20X16	20 x 16
VFD-10D-A 20X18	20 x 18
VFD-10D-A 20X20	20 x 20
VFD-10D-A 24X10	24 x 10
VFD-10D-A 24X12	24 x 12
VFD-10D-A 24X14	24 x 14
VFD-10D-A 24X16	24 x 16
VFD-10D-A 24X18	24 x 18
VFD-10D-A 24X20	24 x 20
VFD-10D-A 24X24	24 x 24
VFD-10D-A 36X14	36 x 14
VFD-10D-A 36X18	36 x 18
VFD-10D-A 36X20	36 x 20
VFD-10D-A 36X36	36 x 36

All dimensions are in inches



FDR-125

True Round Fire Damper with 2" Deep Round Transition

- For Use In Static or Dynamic HVAC Systems
- U.L. 555 Fire Resistance Rating: 1 ½ Hour
- 165°F UL Listed Fusible Link
- Qualified to 2,000 ft/min and 4 in. wg.

Item Number	Size
VFD-10D-C 6	6" Dia
VFD-10D-C 8	8" Dia
VFD-10D-C 10	10" Dia
VFD-10D-C 12	12" Dia
VFD-10D-C 14	14" Dia



FUSIBLE LINK

- Elsie C Fusible Link 165 degrees for use with VFD-10D
- Elsie C Fusible Link 212 degrees for use with Type A and C dynamic fire dampers



Item Number	Size
FUSIBLE LINK - ELSIE C	165°
FUSIBLE LINK - ELSIE C - 212	212°



EFJ-245

Aluminum, 2 " Deep, 45° Degree J Blade, Extruded Louver

- Mill Finish
- 1 ½ flange

Item Number	Size
EFJ-245 8X6	8 x 6
EFJ-245 8X8	8 x 8
EFJ-245 16X8	16 x 8

All dimensions are in inches



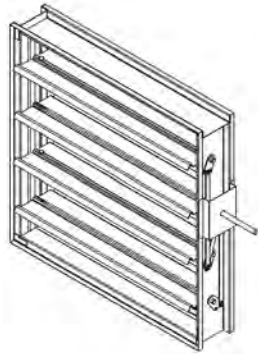
EFD-437

Aluminum, 37.5° Degree Drainable Blade, Extruded Louver

- Certified for Air Performance and Water Penetration
- Mill Finish
- 1 ½ flange

Item Number	Size
EFD-437 12X12	12 x 12
EFD-437 18X12	18 x 12
EFD-437 18X18	18 x 18
EFD-437 24X12	24 x 12
EFD-437 24X18	24 x 18
EFD-437 24X24	24 x 24
EFD-437 36X24	36 x 24
EFD-437 36X36	36 x 36

All dimensions are in inches

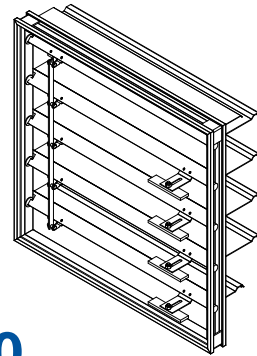


CD-42

Control damper for automatic air control and manual balancing in medium pressure and velocity applications

- Triple-V blade
- Rugged hat channel frame

Item Number	Size
CD-42 12X12	12 x 12
CD-42 18X12	18 x 12
CD-42 18X18	18 x 18
CD-42 24X12	24 x 12
CD-42 24X18	24 x 18
CD-42 24X24	24 x 24
CD-42 36X24	36 x 24
CD-42 36X36	36 x 36



CBD-250

Control damper for automatic air control and manual balancing in medium pressure and velocity applications

- Triple-V blade
- Rugged hat channel frame

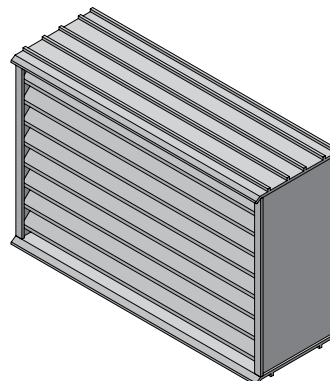
Item Number	Size
CBD-250 12X12	12 x 12
CBD-250 18X12	18 x 12
CBD-250 18X18	18 x 18
CBD-250 24X12	24 x 12
CBD-250 24X18	24 x 18
CBD-250 24X24	24 x 24
CBD-250 36X24	36 x 24
CBD-250 36X36	36 x 36

EBV-445

Permanent means of gravity ventilation for crawl spaces, hung ceilings, incinerator rooms, chimney flues, foundations, pipe spaces, and corridors

- Mill finish 6063-T5 extruded aluminum
- 45° x 0.125" (3) thick J-style
- 18 x 14 mesh aluminum insect screen

Item Number	Size
EBV	8.125 x 7.75
EBV	12 x 7.75
EBV	16.5 x 7.75
EBV	16.5 x 4.75



Actuator

Item Number	Voltage
FSLF-120	120 V
FSLF-24	24 V





DMR

Round Duct Access Doors (Sandwich Type)

- 22 ga. Galvanized Steel Construction
- Max System Pressure: +20" wg., -10" wg

Item Number	Size	Pipe Diameter
DMR 8X4-6	8 x 4	6
DMR 8X4-8		8
DMR 12X8-10	12 x 8	10
DMR 12X8-12		12
DMR 12X8-14		14
DMR 16X12-16	16 x 12	16
DMR 16X12-16		18
DMR 16X12-18		20
DMR 16X12-20		22
DMR 16X12-22		24

All dimensions are in inches

HAD

Hinged Access Doors

- 1 1/2" Fiberglass Insulation
- Galvanized Construction



Item Number	Size
HAD-66	6 x 6
HAD-88	8 x 8
HAD-1010	10 x 10
HAD-1212	12 x 12
HAD-1414	14 x 14
HAD-1616	16 x 16
HAD-1818	18 x 18
HAD-2020	20 x 20
HAD-2424	24 x 24

All dimensions are in inches



ED-2002

Wall and Ceiling Access Doors

- Formed door panel
- Concealed hinge

Item Number	Size
ED 200288	8 x 8
ED 20021212	12 x 12
ED 20021616	16 x 16
ED 20021818	18 x 18
ED 20022424	24 x 24



FB-5060

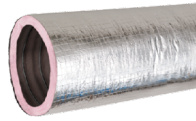
Fire-Rated Uninsulated

- Concealed hinge, self-closing, self-latching
- Inside latch release
- Available with a removable door panel

Item Number	Size
FB 50601212	12 x 12
FB 50601616	16 x 16
FB 50602424	24 x 24

Thermaflex

Flex-Vent 4.2



Diameter	KM	KP	MC
4"	FLEX4KM	FLEX4KP	FLEX4MC
5"	FLEX5KM	FLEX5KP	FLEX5MC
6"	FLEX6KM	FLEX6KP	FLEX6MC
7"	FLEX7KM	FLEX7KP	FLEX7MC
8"	FLEX8KM	FLEX8KP	FLEX8MC
9"	FLEX9KM	FLEX9KM	FLEX9MC
10"	FLEX10KM	FLEX10KM	FLEX10MC
12"	FLEX12KM	FLEX12KM	FLEX12MC
14"	FLEX14KM	FLEX14KM	FLEX14MC
16"	FLEX16KM	FLEX16KM	FLEX16MC
18"	FLEX18KM	FLEX18KM	FLEX18MC

R6 and r8 flex is available, call for pricing and availability.

Duct Bands

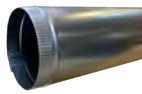
Nylon Duct Bands

Size	Item Number
36"	RC0016-50
48"	RC0017-50



Provided in packs of 50.

SNAPLOCK PIPE & FITTINGS



SnapLock Pipe

- 26 Gauge
- 5' Length



Adjustable Ells

- 26 Gauge



Adjustable Ells

- 24 Gauge

Diameter	Snaplock Pipe	Adjustable Ells	Adjustable Ells
4"	SMP4-5	SME4-90	--
5"	SMP5-5	SME5-90	--
6"	SMP6-5	SME6-90	--
7"	SMP7-5	SME7-90	--
8"	SMP8-5	SME8-90	--
10"	SMP10-5	SME10-90	--
12"	SMP12-5	SME12-90	--
14"	SMP14-5	--	SME14-90
16"	SMP16-5	--	SME16-90
18"	SMP18-5	--	SME18-90



AT Airtite

- no Damper
- 24 Gauge



ATD Airtite

- with Damper
- 24 Gauge



End Cap



Tee

- 90 Degree
- 26 Gauge

Diameter	AT	ATD	End Cap	Tee
4"	SF0005 - 4"	SF0010 - 4"	ECP4GA26	SF1125
5"	SF0015 - 5"	SF0020 - 5"	ECP5GA26	--
6"	SF0025 - 6"	SF0030 - 6"	ECP6GA26	SF1135
7"	SF0035 - 7"	SF0040 - 7"	ECP7GA26	--
8"	SF0045 - 8"	SF0050 - 8"	ECP8GA26	SF1145
9"	SF0055 - 9"	SF0060 - 9"	ECP9GA26	--
10"	SF0065 - 10"	SF0070 - 10"	ECP10GA26	SF1155
12"	SF0075 - 12"	SF0080 - 12"	ECP12GA26	SF1160
14"	SF0085 - 14"	SF0090 - 14"	ECP14GA26	SF1165
16"	SF0095 - 16"	SF0100 - 16"	ECP16GA26	--
18"	--	SF0110 - 18"	--	--

High Efficiency Takeoff With Damper

- 26 Gauge

Size	Item Number
8"x 14"- 10"	TA57D10
10"x 16"- 12"	TA57D12
6"x 10"- 6"	TA57D6
6"x 12"- 8"	TA57D8





Spiral Pipe
 • 26 Gauge
 • 10' Length



90 Degree
 • 24 Gauge



45 Degree
 • 24 Gauge



Coups
 • 24 Gauge



End Cap
 • 24 Gauge



Reducer
 • 24 Gauge

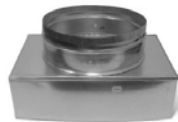


Saddles
 • 24 Gauge

Diameter	Pipe	90 Deg	45 Deg	Coups	End Cap	Reducer	Sad
4"	SPF410	--	--	--	--	--	--
5"	SPF510	590G	545	5GPC	5GEP	5X?	?on5
6"	SPF610	690G	645	6GPC	6GEP	6X?	?on6
7"	SPF710	790G	745	7GPC	7GEP	7X?	?on7
8"	SPF810	890G	845	8GPC	8GEP	8X?	?on8
9"	SPF910	990G	945	9GPC	9GEP	9X?	?on9
10"	SPF1010	1090G	1045	10GPC	10GEP	10X?	?on10
12"	SPF1210	1290G	1245	12GPC	12GEP	12X?	?on12
14"	SPF1410	1490G	1445	14GPC	14GEP	14X?	?on14
16"	SPF1610	1690G	1645	16GPC	16GEP	16X?	?on16
18"	SPF1810	1890G	1845	18GPC	18GEP	18X?	?on18
20"	SPF2010	2090G	2045	20GPC	20GEP	20X?	?on20
22"	SPF2210	2290G	2245	22GPC	22GEP	22X?	?on22
24"	SPF2410	2490G	2445	24GPC	24GEP	24X?	?on24

STR Square to Round Transition with Collar

Size	Item Number
6 x 6 / 6" Dia	STR666
8 x 8 / 6" Dia	STR886
8 x 8 / 8" Dia	STR888
9 x 9 / 6" Dia	STR996
9 x 9 / 8" Dia	STR998
10 x 10 / 8" Dia	STR10108
10 x 10 / 10" Dia	STR101010
12 x 12 / 8" Dia	STR12128
12 x 12 / 10" Dia	STR121210
12 x 12 / 12" Dia	STR121212
14 x 14 / 10" Dia	STR141410
14 x 14 / 12" Dia	STR141412
15 x 15 / 12" Dia	STR151512
15 x 15 / 14" Dia	STR151514
18 x 18 / 16" Dia	STR181816
18 x 18 / 18" Dia	STR181818

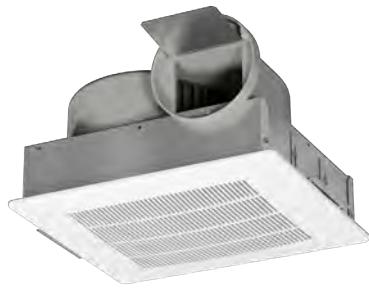


Tapered Reducer

- No Crimp

Size	Item Number
4 to 3	SMO800
5 to 4	SMO802
6 to 4	SMO803
6 to 5	SMO804
8 to 6	SMO820
10 to 6	SMO830
10 to 8	SMO835
12 to 8	SMO845
12 to 10	SMO850
14 to 10	SMO860
14 to 12	SMO865





GC 126-188

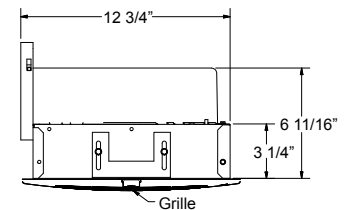
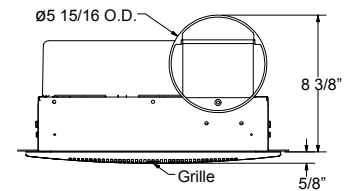
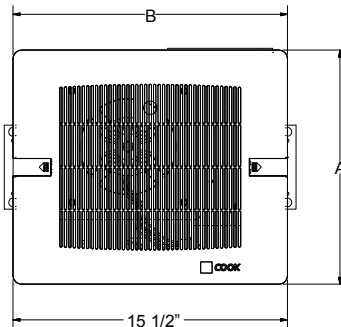
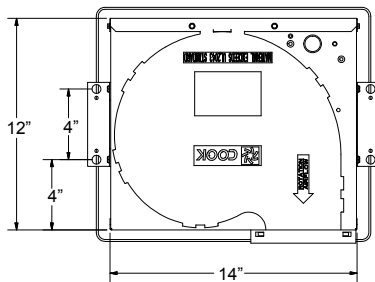
- Manufactured by an ISO 9001 certified company
- AMCA certified ratings seal for sound and air performance
- Listed by Underwriters Laboratories UL 705
- Permanently Lubricated ODB, 2-speed motor with thermal overload protection
- Forward curved polypropylene wheel balance to AMCA Standard 204-05
- High impact styrene grille
- Simple conversion from ceiling to inline with kit # 797181
- Optional fan speed controller available for precise system balancing
- Standard 115/1/60 fan motors



Performance Data

Model GC	Max. Watts	RPM	HVI Sones†	0.0 SP		.100 SP		.125 SP		.250 SP		.375 SP		.500 SP		.625 SP		.750 SP	
				CFM	Sones	CFM	Sones	CFM	Sones	CFM	Sones	CFM	Sones	CFM	Sones	CFM	Sones	CFM	Sones
GC-126	50	800	0.7	60	1.0	59	1.1	58	1.1	56	1.3	53	2.0	49	2.7	42	3.5	28	4.4
GC-128	64	900	1.1	81	1.5	80	1.6	79	1.6	77	1.7	73	2.1	67	2.7	59	3.3	49	4.2
GC-146	59	1000	1.1	111	1.6	97	1.7	94	1.7	84	1.9	76	2.2	68	2.7	60	3.4	48	4.5
GC-148	98	1100	2.0	139	2.8	133	2.9	131	2.9	124	3.0	117	3.2	108	3.4	97	3.7	84	4.2
GC-166	103	1200	2.5	154	3.3	151	3.4	150	3.4	145	3.6	140	3.7	131	3.8	117	4.0	105	4.1
GC-168	145	1300	4.0	190	4.9	186	4.8	185	4.8	180	4.7	174	4.7	166	4.7	148	4.7	131	4.7
GC-186	185	1400	5.5	232	6.9	227	6.9	226	6.8	219	6.8	212	6.7	203	6.6	189	6.5	173	6.4
GC-188	220	1500	6.0	262	7.7	255	7.6	253	7.5	244	7.4	234	7.2	222	7.1	207	6.9	189	6.6

Performance shown is for Installation Type B: Free inlet, ducted outlet. Performance ratings for GC-126 through GC-188 include the effects of inlet grille in the airstream. Speed (RPM) shown is nominal. Performance is based on actual speed of the test. The sound ratings shown are loudness values in hemispherical sones at 5 ft. (1.5m) in a hemispherical free field calculated per AMCA Standard 301. Values shown are for Installation Type B: Free inlet hemispherical sone levels. †HVI sones @ .1" static pressure. AMCA Certified Ratings Seal does not apply to HVI Sones.



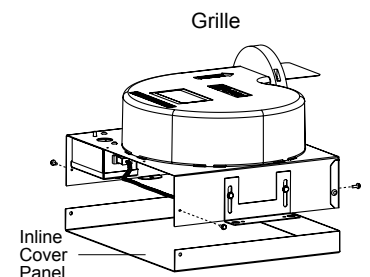
Grille Material	A	B
Plastic	13-1/4	15-1/2

Unit Size	Approx. Ship-Wt. Lbs.
126/128	13
146/148	15
166/168	15
186/188	16

Ceiling to Inline Conversion Kit

The Gemini 100 series can be converted from ceiling to inline by following these steps:

1. Remove and discard the inlet box end plate.
2. Install the inline cover panel with sheet metal screws as shown on the following page. Ceiling to Inline Conversion Kit (Part Number 797181).





Gemini 222-740



Gemini 822-862

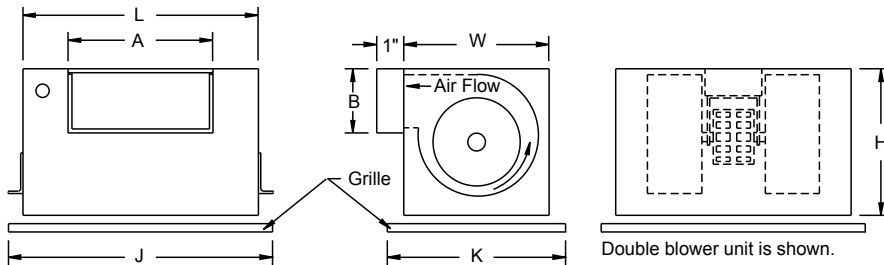
GC 222-862

- Manufactured by an ISO 9001 certified company
- AMCA certified ratings seal for sound and air performance
- Listed by Underwriters Laboratories UL 705
- Minimum 20 gauge galvanized steel, acoustically insulated cabinet
- Permanently Lubricated ODB motor with thermal overload protection
- Forward curved galvanized steel wheel balance to AMCA Standard 204-05
- High impact styrene grille on 200 & 300 series
- Powder painted white steel grille on 400 through 800 series
- Simple conversion from ceiling to inline. No kit required.
- Optional fan speed controller available for precise system balancing
- Standard 115/1/60 fan motors

Performance Data

Model GC	Max. Watts/BHP	RPM	HVI Sones†	.0.0 SP		.100 SP		.125 SP		.250 SP		.375 SP		.500 SP		.625 SP		.750 SP	
				CFM	Sones	CFM	Sones	CFM	Sones	CFM	Sones	CFM	Sones	CFM	Sones	CFM	Sones	CFM	Sones
GC-222	39	1050	0.8	120	1.2	107	1.2	104	1.1	73	1.3								
GC-242	65	1200	1.3	147	2.2	130	1.9	126	1.9	99	1.5								
GC-322	75	1365	3.0	217	4.4	205	4.1	202	4.1	182	3.8	148	3.3						
GC-342	135	1610	3.5	257	4.9	237	4.5	232	4.4	212	4.3	187	4.1						
GC-422	170	1145	3.5	327	5.3	294	4.3	287	4.0	260	3.4	236	2.9	202	2.7				
GC-522	172	1205	4.5	356	5.9	347	5.7	344	5.7	332	5.5	318	5.1	301	4.6	279	4.3	249	4.0
GC-622	233	960	2.5	451	3.7	433	3.3	428	3.3	400	3.3	359	3.3	297	3.6				
GC-642	351	1075	3.5	559	4.6	520	4.3	512	4.3	476	4.1	429	4.0	346	3.9				
GC-720	301	1375	5.5	709	6.7	687	6.6	682	6.6	653	6.6	619	6.3	578	6.1	535	5.9	480	5.7
GC-740	374	1625	7.0	852	8.7	823	8.3	815	8.3	775	7.9	727	7.5	672	7.1	616	6.3	552	5.6
GC-822	293	910	3.5	944	4.4	929	4.6	925	4.7	904	5.0	879	4.9	830	4.8				
GC-842	380	974	5.0	1187	6.1	1157	6.2	1149	6.2	1106	6.4	1043	5.9	905	5.5	637	4.7		
GC-862	450	1098	7.0	1433	8.5	1371	8.2	1355	8.2	1266	7.8	1149	6.9	995	6.1	775	5.3		

Performance shown is for Installation Type B: Free inlet, ducted outlet. Performance ratings for GC-222 through GC-960 include the effects of inlet grille and backdraft damper in the air-stream. Speed (RPM) shown is nominal. Performance is based on actual speed of the test. The sound ratings shown are loudness values in hemispherical sones at 5 ft. (1.5m) in a hem ispherical free field calculated per AMCA Standard 301. Values shown are for Installation Type B: Free inlet hemispherical sone levels. †HVI sones @ .1" static pressure. AMCA Certified Ratings Seal does not apply to HVI Sones.



Dimension Data

Model GC	Housing			Outlet		Plastic Grille		Steel Grille		Deluxe Aluminum Grille		Approx. Ship-Wt. Lbs.
	L	W	H	A	B	J	K	J	K	J	K	
222, 242	12-3/8	9-3/4	9-3/4	8	6	15-1/2	13-1/4	16-3/8	13-5/8	14-1/4	11	22
322, 342	12-3/8	10-3/4	10-3/4	8	6					14-1/4	12-1/4	25
422	17	11-7/8	11-7/8	8	6			21	14-1/4	18-3/4	13-3/4	30
522	17	11-7/8	11-7/8	8	6			21	14-1/4	18-3/4	13-3/4	32
622, 642	17	11-7/8	11-7/8	10-1/2	4-3/4			21	14-1/4	18-3/4	13-3/4	35
720, 740	17	11-7/8	11-7/8	10-1/2	4-3/4			21	14-1/4	18-3/4	13-3/4	36
822, 842, 862	27	14-11/16	14-11/16	20	6			31-3/8	17-1/8	28-3/4	16-1/4	74

ED-2002 - Wall and Ceiling Access Doors



Application

- Installation in Drywall, Plaster, Masonry, Tile or any flush surface
- Economical and attractive access door for walls & ceilings

Product Features

- Formed door panel
- Concealed hinge

ED-2002 Access Door Specifications:

Material: 18 gauge steel door and frame

Door: Flush to frame with reinforced edges

Door Frame: 1" wide outside flange with 1-7/16" deep mounting frame. Knock over mounting tabs provided on 6x6, 8x8, 10x10 and 12x12

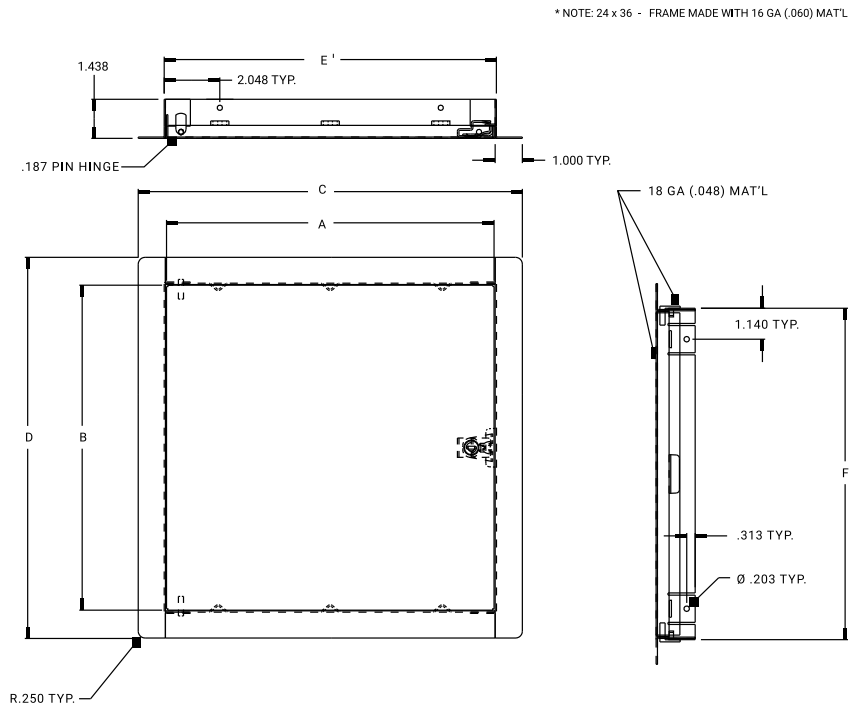
Hinge: Concealed Hinge Pin

Latch: Stainless steel slot screwdriver operated cam latch

Optional Latches/Locks: Cylinder lock and key, allen head cam latch, spanner head cam latch

Finish: 5 Stage iron phosphate preparation with prime coat of White alkyd baking enamel

Size	Item Number
8 x 8	ED200288
12 x 12	ED20021212
16 x 16	ED20021616
18 x 18	ED20021818
24 x 24	ED20022424



FB-5060 - Fire-Rated Uninsulated



Application

- For wall applications.
- Designed to maintain continuity in a 2 hour fire rated wall, when temperature is not a factor

Product Features

- Concealed hinge • Self-closing • Self-Latching
- Inside latch release
- Available with a removable door panel

FB-5060 Access Door Specifications:

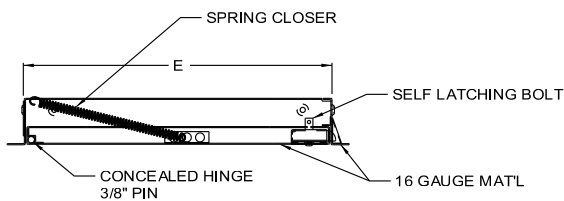
Door / Door Frame: Steel or Stainless Steel: 16 gage door, 16 gage mounting frame. Flush to frame with reinforced edges, flange to be 1" wide

Hinge: Concealed

Fire Rating (Walls): UL – 1-1/2 hour "B" label. ULC – 2 hour "B" label. (optional)
Max size 36 x 48

Standard Latch: Universal self-latching bolt, operated by either a knurled knob or flush key. When master keying is required, doors can be prepared for rim or mortise cylinder locks.

Finish: Steel: 5 stage iron phosphate preparation with prime coat of White alkyd baked-on enamel. Stainless Steel: #4 satin polish.

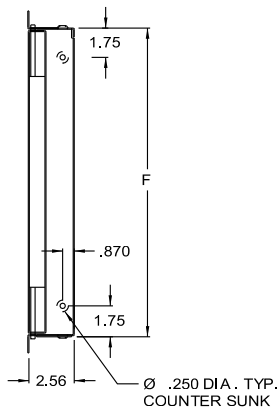
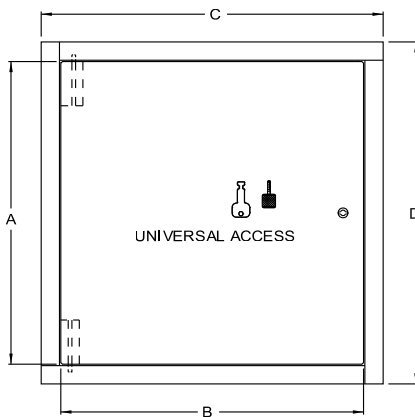


WALLS

Approved by Underwriters Laboratories (UL) for 1 1/2 hours "B" label in walls and ULC for 2 hours "B" label in walls.



Size	Item Number
12 x 12	FB50601212
16 x 16	FB50601616
24 x 24	FB50602424



HAVTECH, LLC TERMS AND CONDITIONS OF SALE HEATING AND AIR CONDITIONING PRODUCTS

COMPANY: The Company as used herein shall mean HAVTECH, LLC or one of its subsidiaries as elsewhere stated herein.

PRICE POLICY: Prices of the goods may be increased depending on the date of release and/or shipment of the order announced increases in the Company's list prices or increases in labor and material cost.

TERMS OF PAYMENT: Terms of payment are subject at all times to prior approval of the Company's credit department. Terms of the payment are net 30 days of date of invoice unless previously otherwise agreed in writing. If at any time the financial condition of the Purchaser or other circumstances affecting the credit decision, in the Company's opinion, does not justify continuance of production of products or shipment of products on the terms of payment specified. The Company may require full or partial payment in advance or may at its sole discretion stop or delay production or shipment of products. In the event of default in payment, Purchaser agrees to pay all costs of collection incurred by Company including but not limited to collection agency fees, attorney fees and court costs. All past due amounts shall bear interest highest rate allowed by law. Invoices for \$3,000 or more paid with a credit card are subject to a 3% surcharge.

SHIPPING TERMS: All shipments will be made F.O.B. factory with freight as quoted. All shipments will be made via a low-cost common carrier and charges for special carrier services requested, by the Purchaser shall be paid by the Purchaser. The Company may ship the good in one or more lots.

CLAIMS: The responsibility of the Company for all shipments ceases upon delivery of goods in good order to the carrier. Since all goods are shipped at Purchaser's risk, any claims for damage or shortage, in transit must, be filed by Purchaser against carrier. Claims for factory shortages will not be considered unless made in writing to the Company within ten (10) days after receipt of the goods and accompanied by Company's bill of lading and factory order numbers.

TAXES: The amount of any present or future taxes applicable to the product shall be added to the price contained herein and paid by the Purchaser in the same manner and with the same effects as if originally added thereto.

CANCELLATIONS: Accepted orders are not subject to cancellation without the Company being reimbursed for any and all expenses and being indemnified by purchaser against any and all loss.

SHIPMENT DATES: Shipments are only estimates. No contract has been made to ship in a specified time unless in writing and signed by two officers of the Company.

PRODUCT CHANGES: In the interest of continuous product improvements, the Company reserves the right to change specification and/or design without incurring obligation.

RETURNED GOODS: Goods may not be returned except by permission of an authorized Company official at Havtech, when so returned will be subject to handling and transportation charges. Authorized return goods must be shipped prepaid to the location designated by the authorization. Return goods shall not be shipped to Havtech's Corporate Office.

LIMITED WARRANTY: The Company warrants that it will provide free replacement parts in the event any products sold by Company and used in the United States or Canada, proves defective in material or

workmanship for a period of twelve (12) months from the initial start-up or eighteen (18) months from date of shipment, whichever expires sooner. Goods not manufactured by the Company sold under this agreement are warranted only to the extent that the manufacturer warranted them to the Company or directly to the Purchaser.

The Company's liability to the Purchaser shall not exceed the lesser of the cost of correcting defects in the goods sold or the original purchase price of the goods and the Company shall not in any event be liable to buyer or third parties for any delays of special, indirect or consequential damages.

The Company's warranty does not apply to any goods which have been opened, disassembled, repaired, or altered by anyone other than the Company or its authorized service representative or which have been subjected to misuse, misapplication, or abuse. The Company is not obligated to pay any labor or service costs for removing or replacing parts, or any shipping charges. Refrigerants, fluids, oils, and expendable item such as filters are not covered by this warranty. This parts warranty and any optional extended warranties are granted only to the user. Company's duty to perform under any warranty may be delayed, at Company's sole option, until Company has been paid in full for all goods purchased by Purchaser. No such delay shall extend the warranty period.

THIS WARRANTY CONSTITUTES THE PURCHASER'S SOLE REMEDY. IT IS GIVEN IN LIEU OF ALL OTHER WARRANTIES; EXPRESS OR IMPLIED. THERE IS NO IMPLIED WARRANTY OF MERCHANTABILITY OR FITNESS FOR A PARTICULAR PURPOSE, IN NO EVENT AND UNDER NO CIRCUMSTANCES SHALL HAVTECH, LLC. BE LIABLE FOR INCIDENTAL OR CONSEQUENTIAL DAMAGES, WHETHER THE THEORY BY BREACH OF THIS OR ANY OTHER WARRANTY NEGLIGENCE OR STRICT TORT.

The Company must receive a start-up information report for goods containing motor-compressors and/or furnaces. The registration/start-up form must be completed and returned to the Company within ten (10) days of original equipment start-up or start-up date and ship dates will be deemed the same for warranty determination.

No person (including any agent, salesperson, dealer or distributor) has the authority to expand the Company's obligation beyond the terms of express warranty, or to state that the performance of the product is other, than published by the Company.

TERMS OF SALE: Sale of goods covered hereby to Purchaser is made solely on the terms and conditions set forth herein, notwithstanding any additional or conflicting terms and conditions that may be contained in any purchase order or other form of purchase, all of which additional or conflicting terms and conditions are hereby rejected by the Company unless agreed upon in writing and signed by an officer of the Company. No waiver alteration or modification of the foregoing terms and conditions shall be valid unless made in writing and signed by an authorized official of HAVTECH, LLC. In particular and without limiting the foregoing, notwithstanding anything to the contrary in purchase order or any other documents, the Company does not accept any order subject to project design and specifications. Purchaser to accept full and sole responsibility to determine whether the product ordered by Purchaser meets the design and specification requirements of any project.

Havtech reserves the right to modify the Terms and Conditions of Sale at any time.



Bridgeville Store
368 Commercial St # 100,
Bridgeville, PA 15017
(412) 564-5800
info@ies-pgh.com

Columbia Store
9505 Berger Road
Columbia, MD 21046
(240) 568-0960
parts@havtech.com

Capitol Heights Store
1101 Hampton Park Blvd, Suite 400
Capitol Heights, MD 20743
(240) 547-0287
parts@havtech.com